

Up/down buttons to navigate list instead of scrollbar as on CFM v1; duplicate this style on CFM v2.

*[Button use is much easier (than scrolling) on touch-screen devices (for most users).]*

List alphabetically by language.

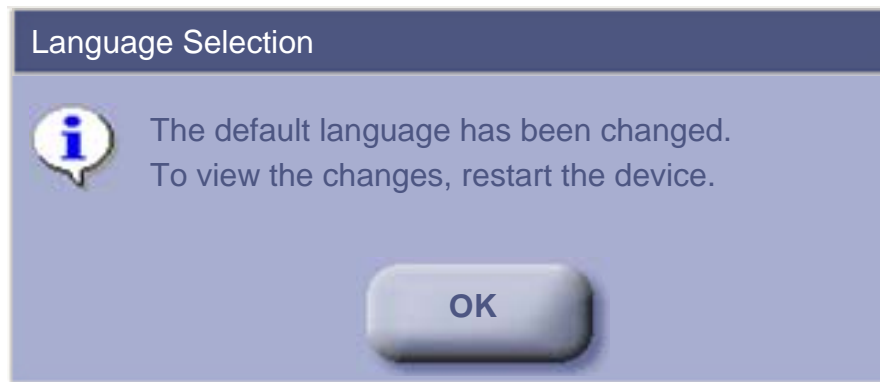
*[For International Dealer Review: Keep in English? Translate all? Translate individual default only?]*

English is the default at initial start. When user OKs selection, selected becomes default.

*[Note, CFM v.1 defaults to faint outline in English even though another language is at 'default'. Match CFM v.2 to CC function. On CFM v.2 also relocate the "date layout" feature to the Display tab of the Settings window.]*

Change languages and allow nurse/physician to continue use without rebooting the device.

*[Make CFM v.2 do likewise.]*



*[Changes to CFM v.2:  
Title bar made consistent with task]*

*Added call to language file to confirm the language selection here (though it's not particularly imperative that this be added as they'll need to reboot, then come back to the Language Selection to choose another language)*

*Cleaned up the content]*